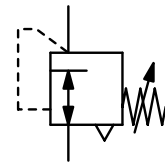


Description	Compact, high-precision, diaphragm-operated pressure regulator for panel-mounting.	
Media	non-corrosive gases, filtered, lubricated or unlubricated compressed air	
Supply pressure	max. 17 bar	
Air consumption	ca 1.5 l/min at 7 bar supply pressure	
Adjustment	by handwheel with locknut	
Relieving function	relieving	
Gauge port	RT-M5: gauge port M5	RT-MF: not available
Mounting position:	any	
Temperature range	0 °C to 70 °C / 32 °F to 158 °F, for appropriately conditioned compressed air down to -30 °C / -22 °F	
Material	Body: anodized aluminium Elastomer: FKM Inner valve: stainless steel and brass	



**M5 or flangeable
0...350 mbar/7 bar**

Dimensions			Flow rate l/min*1	Supply pressure max. bar	Connection thread M5 / Flansch	Pressure range bar	Order number
A	B	C					
mm	mm	mm					

Pressure regulator M5				supply pressure max. 17 bar, with constant bleed		RT	
25	83	14.5	100	17	M5	0...0.35	RT-M5A
						0... 1.1	RT-M5B
						0... 2.1	RT-M5C
						0... 4.2	RT-M5D
						0... 7.0	RT-M5E



**RT-M5C
with mounting nut**

Regulator with flange				supply pressure max. 17 bar, with constant bleed			RT
25	83	–	100	17	flange	0...0.35	RT-MFA
						0... 1.1	RT-MFB
						0... 2.1	RT-MFC
						0... 4.2	RT-MFD
						0... 7.0	RT-MFE



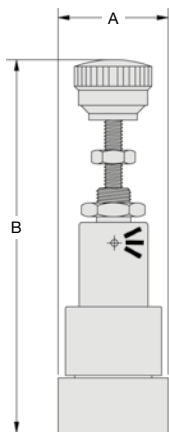
**RT-MFC
with flange and mounting nut**

Special options, add the appropriate letter

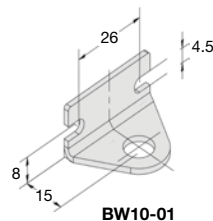
side connection	M5 or o-ring	RT-M . .X14
1/16" NPT	ports with female threads	RT-M . .X61

Accessories, enclosed

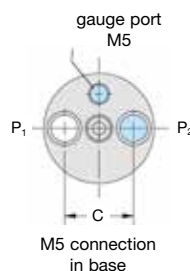
mounting bracket	made of steel, mounting nut at the device	BW10-01
-------------------------	---	----------------



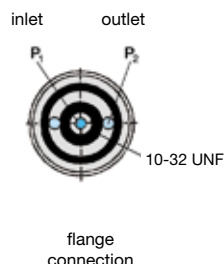
RT-M5



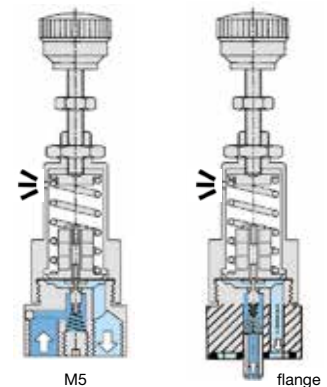
BW10-01



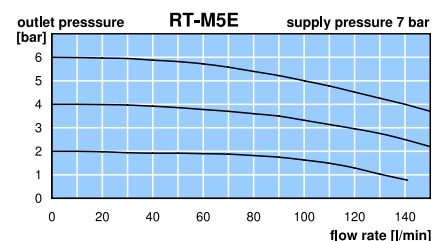
RT-M5



RT-MF



cross section



*1 for compressed air: 7 bar supply pressure, 6 bar outlet pressure and 1 bar pressure drop

